

COMMVAULT®

► Documentation PDF

PROTECT. ACCESS. COMPLY. SHARE



Table of Contents

Table of Contents	2
Quick Start Guide	3
Quick Start Guide - Install the Software	4
Quick Start Guide - Open the CommCell Console	6
Quick Start Guide - Configure a Storage Device	7
Quick Start Guide - Create a Subclient	9
Quick Start Guide - Back Up Data	18
Quick Start Guide - Restore Data	21
Quick Start Guide - What to Do Next	26
Trademark Acknowledgment	27
Commvault Worldwide Headquarters	27
Commvault Regional Offices	27

Quick Start Guide

You can use this Quick Start Guide to set up a simple CommCell environment and to perform basic data protection and recovery operations, which might be useful as a proof of concept or in a test environment. This guide is not intended to be used to deploy the software in a production environment without careful planning. If you are deploying the software in a production environment, see [Installations](#).

Before You Begin

To gain an understanding of the general concepts and capabilities of the software, review the overview information about the software:

- [Software Overview](#)
- [Software Capabilities](#)
- [CommCell Environment Group Overview](#)
- [CommCell Logical Architecture](#)

Quick Start Process

1. Installing a CommServe and MediaAgent on a computer. The Windows File System Agent is automatically installed as part of the CommServe installation.
2. Accessing the CommCell environment using the CommCell Console.
For more information about the CommCell Console, see [CommCell Console - Basic](#).
3. Configuring a storage device for the data you back up.
4. Creating a subclient, defining the data to back up, and creating a storage policy to map the backed up data from its original location to the storage device you configure.
5. Backing up data from the client computer.
6. Restoring data back to the client computer.

Performing these steps will give you a better understanding of the basic data protection operations of the software.

Last modified: 1/11/2018 3:53:55 PM

Quick Start Guide - Install the Software

Using this procedure, the following components will be installed in your environment:

- **CommServe** server, which communicates with all clients and MediaAgents and coordinates all operations, such as backups, restores, copies, and media management, within a CommCell.
- **MediaAgent**, which manages the transmission of data between clients and backup media.
- **File System Agent**, which performs the backup and restore of the clients data.

Before You Begin

- Verify that the computer where you will install the software satisfies the minimum requirements:
 - [System Requirements - CommServe](#)
 - [System Requirements - MediaAgent](#)
 - [System Requirements - Microsoft Windows File System iDataAgent](#)
- Obtain the installation package that was created using the Download Manager. You need the installation package to launch the installation wizard on the server computer.
To create the package, see [Downloading Software for Windows Computers Using the Download Manager](#)

Procedure

1. Log on to the computer as an Administrator or as a member of the Administrator group on that computer..
2. Run **Setup.exe** from the installation package.
The installation wizard opens.
3. On the welcome page, select the **I Agree** check box and proceed to the next page.
4. On the **Choose the Installation Type** page, click **Select packages to install on this computer** and proceed to the next page.
5. On the **Select Packages** page, select the **CommServe** and **MediaAgent** check boxes, and proceed to the next page.
Note: The Windows File System Agent is automatically installed with the CommServe.
6. Follow the instructions in the installation wizard and accept all of the default options.
Note: If firewall is enabled for some Windows profiles, the **Firewall Configuration** page appears. Select the option to disable firewall for all profiles.

What To Do Next

1. During the installation, the CommCell administrator account is automatically created and assigned the account credentials:
 - User name: admin
 - Password: <blank>

You must set a password for the CommCell administrator account. For instructions, see [Changing the CommCell Administrator Password](#).

2. Now that you have installed the software, access the CommCell using the CommCell Console. See [Quick Start Guide - Open the CommCell Console](#).

Quick Start Guide - Open the CommCell Console

After installing the software, access your CommCell environment using the CommCell Console, the central management console used to configure the CommCell environment, monitor and control active jobs, and view events related to all activities. This allows for centralized and decentralized organizations to manage all data movement activities through a single interface. For detailed information about the CommCell Console, see [CommCell Console - Basic](#).

Procedure

1. Based on your Windows operating system, open the CommCell Console:

On Windows 8 and Windows Server 2012 computers

- a. Click the Windows **Start** menu.
- b. From the list of apps, under **Commvault**, click **Commvault CommCell Console**.

On computers older than Windows 8 and Windows Server 2012

- a. From the Windows **Start** menu, click **All Programs**.
- b. From the list of programs, click **Commvault** > **Commvault CommCell Console**.

2. In the **Connect to CommCell** dialog box, enter the CommCell Console administrator account **User Name** and **Password** that you created during installation.

3. Click **OK**.

Note: If you have not activated the license yet, you receive a reminder.

4. When the CommCell Console opens, note the following:
 - o CommServe: Appears as the top-level node in the CommCell Browser and as a client under **Client Computers**
 - o MediaAgent: Expand **Storage Resources** > **MediaAgents**
 - o Windows File System Agent: Expand **Client Computers** > *your CommServe client*

What to Do Next

Now that you have accessed your CommCell environment, use the CommCell Console to configure a storage device for your backup data. See [Quick Start Guide - Configure a Storage Device](#).

Last modified: 2/9/2018 5:14:54 PM

Quick Start Guide - Configure a Storage Device

After installing the software, and accessing the CommCell using the CommCell Console, configure a storage device (tape drive or disk device) attached to the MediaAgent to establish communications, and allow the storage device to be used to store backup data.

Depending on the type of storage devices that are attached to your MediaAgent, you can configure one or both of these devices:

- [Option 1: Configuring a Disk Device](#) [↗](#)
- [Option 2: Configuring a Tape Device](#) [↗](#)

If you have other types of storage devices, refer to the **Configuration** section in [Media Management](#) [↗](#) for information.

Option 1: Configuring a Disk Device

1. From the CommCell Browser, expand to **Storage Resources**.

2. Right-click **Libraries**, and then click **Add | Disk Library**.

The **Add Disk Library** dialog box appears.

3. In the **Name** box, type the name for a disk library.

4. Select the appropriate MediaAgent from the **MediaAgent** list.

If the device is a direct-attached library such as SAS/FC/iSCSI for Windows or NFS for UNIX/Linux MediaAgents, define the mount path as a local path.

Note: If the MediaAgent is a UNIX/Linux MediaAgent, then you must select the Local Path option. To access an NFS share, you must mount the share to your UNIX/Linux MediaAgent. Once the share is mounted, it appears as another local directory on the system. You can provide this directory location in the local path.

- a. Select **Local Path**.
- b. In the **Disk Device** box, enter the mount path location.

5. If the device is on a network, define the mount path as a network path.

Note: The Network Path option is available only for Windows MediaAgents that use CIFS shares.

- a. Select **Network Path**.
- b. In the **Connect As** box, type the user name.
- c. In the **Password** and **Verify Password** box, type the password that is used by the backup software to access the network share.
- d. In the **Folder** box, enter the mount path location.

6. Click **OK**.

The new disk library appears in the CommCell Browser under **Storage Resources | Libraries**.

Option 2: Configuring a Tape Device

1. From the CommCell Browser, expand to **Storage Resources**.

2. Right-click **Libraries**, and then click **Add | Tape Library**.

The Add Tape Library dialog box appears.

3. Select the appropriate MediaAgent from the MediaAgent list.

4. Click **Scan Hardware**.

The tape library that is associated with the selected MediaAgent is detected. It appears in the Add Tape Library dialog box as **Not configured**.

5. Right-click the detected library, and then click **Configure**.

A message appears that tells you that the library was configured successfully.

6. Click **OK**.

The new tape library is now configured.

7. Click **OK**.

The new tape library appears in the CommCell Browser under **Storage Resources | Libraries**.

What To Do Next

Now that you have configured a storage device, configure a subclient to define the data to be backed up. See [Quick Start Guide - Create a Subclient](#).

Last modified: 8/6/2018 8:23:14 PM

Quick Start Guide - Create a Subclient

After a storage device has been configured, configure a subclient to define the data that will be backed up.

Subclients are logical containers that define the specific data that will be protected (drives, folders, files, databases, mailboxes.) During installation of some agents, a default backup set is automatically created, which contains a default subclient. The default subclient is designed to act as a catch all, automatically detecting and protecting all data the agent is responsible to protect. Additional subclients can be configured to define content and how it will be protected. For more information about subclients, see [Subclients Overview](#) [↗](#).

Use this procedure to create a subclient named "Test_Subclient" to perform your first backup.

Procedure

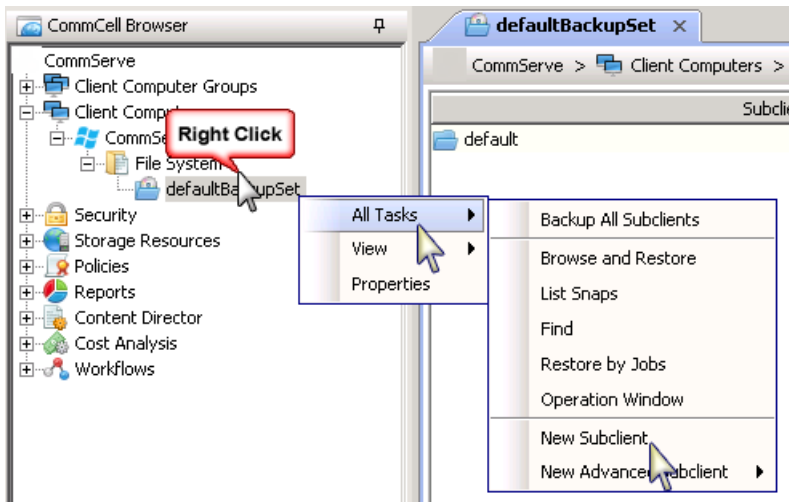
1. From the CommCell Browser, expand **Client Computers > client > Agent**.
2. Right-click the **defaultBackupSet**, point to **All Tasks** and then click **New Subclient**.

The **Create New Subclient** dialog box appears.

3. The **default** subclient is automatically created when you install the software.

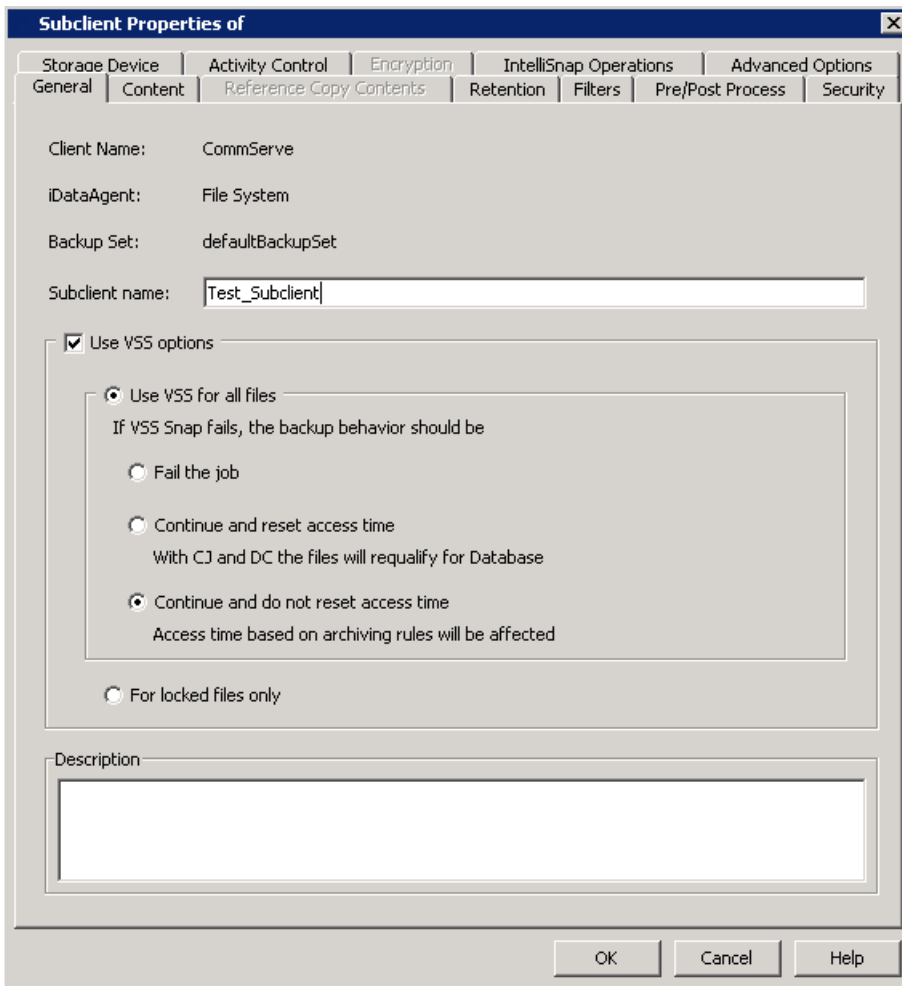
The content of the default subclient includes all of the data in the computer.

When you create a user-defined subclient, the contents of the user-defined subclient are automatically removed from the default subclient content.

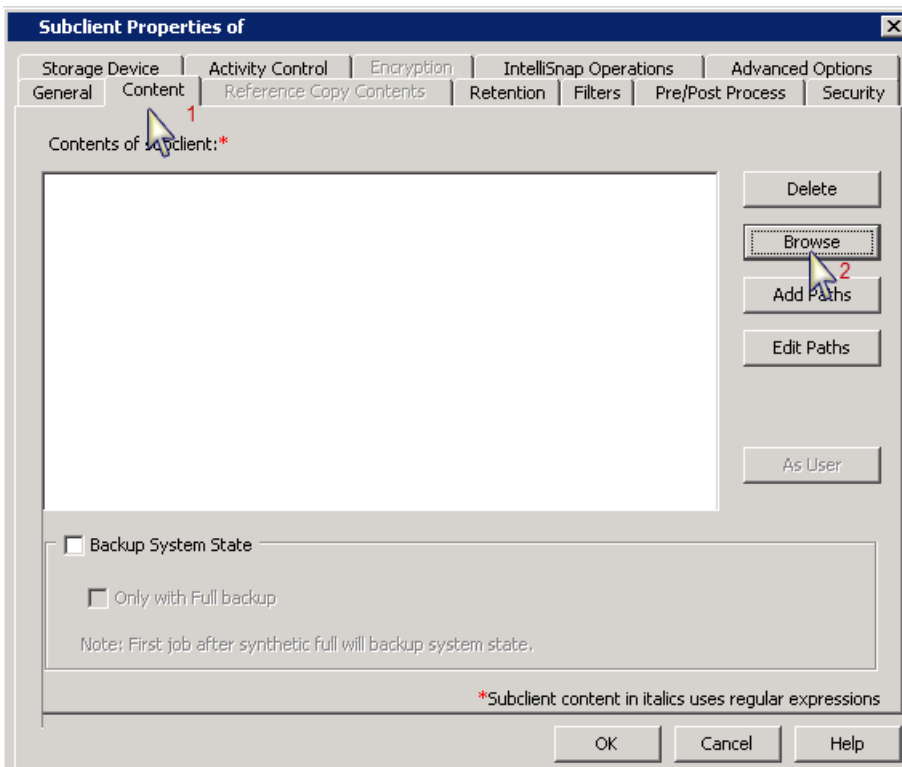


4. On the **General** tab, in the **Subclientname** box, type a name for the subclient.

Note: In this example, we will use **Test_Subclient**.



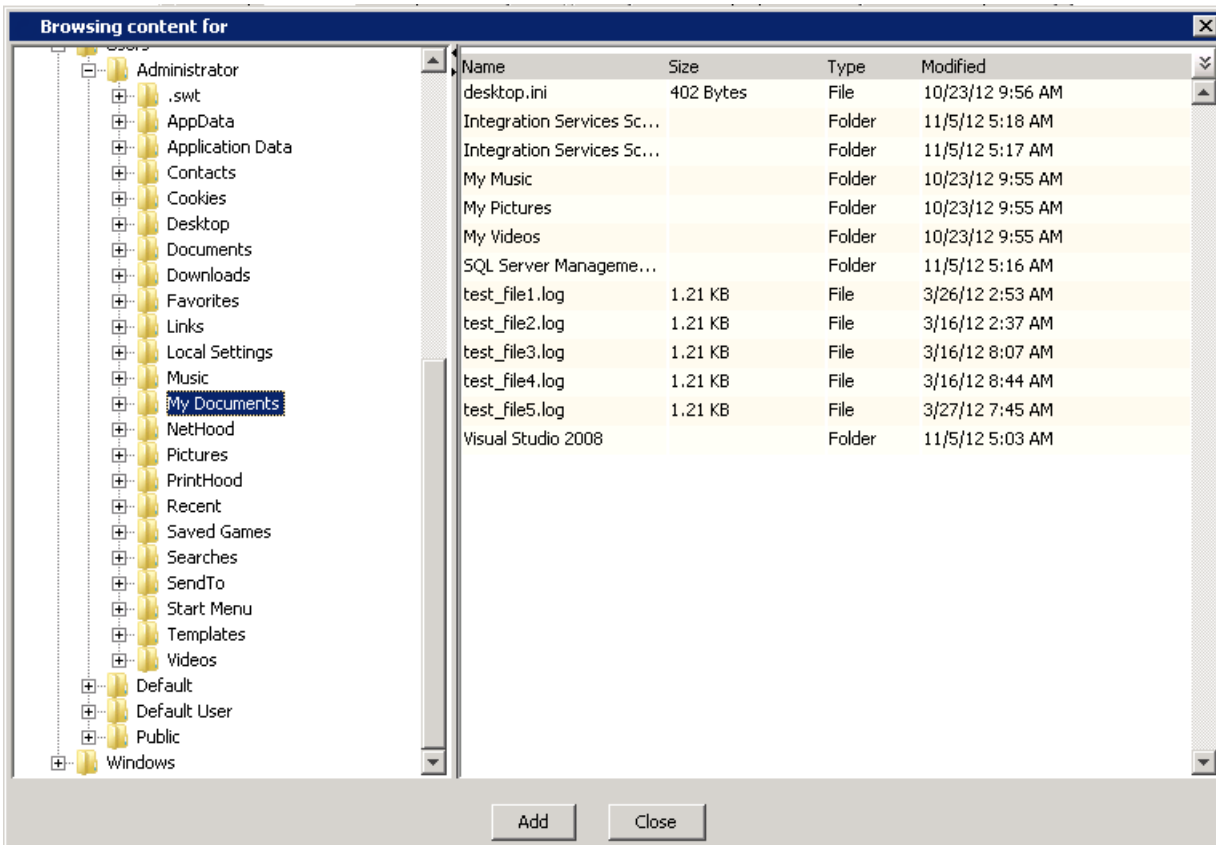
5. On the **Content** tab, click **Browse**.



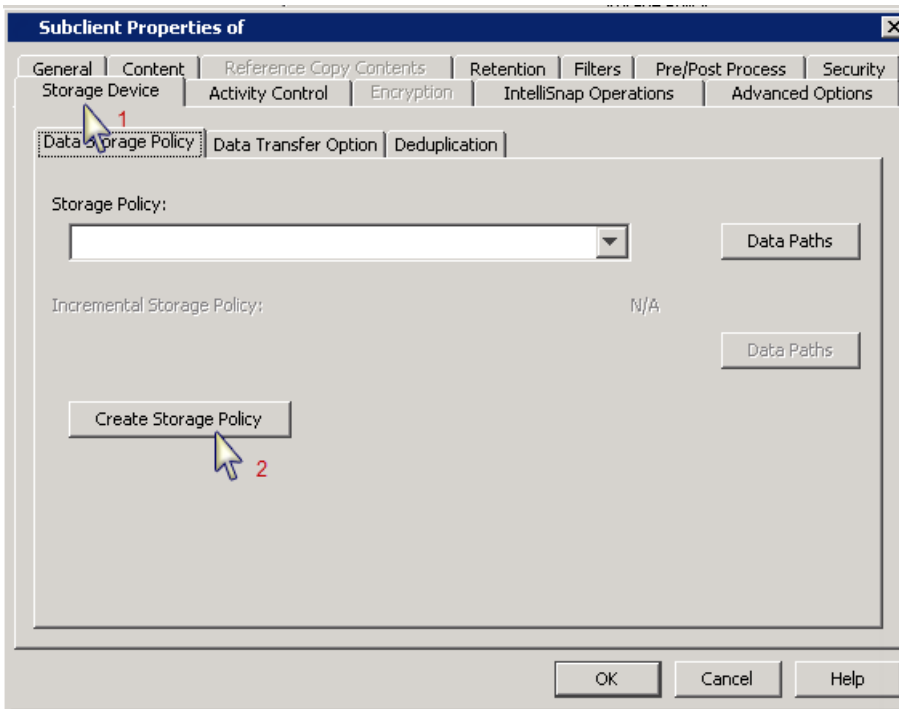
6. Navigate through the list of folders to select the files and folders that you want to include in the backup. In this example, we will include the **My Documents** folder as the subclient content.

Select **My Documents** and then click **Add**.

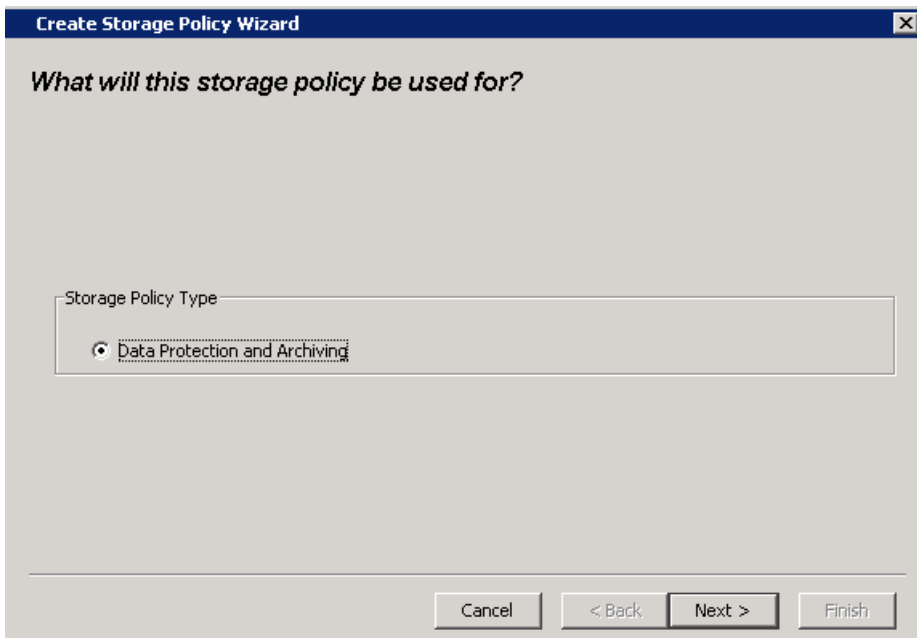
Click **Close** to close the **Browsing content for** dialog box.



7. To create a storage policy, click the **Storage Device** tab and then click **Create Storage Policy**.



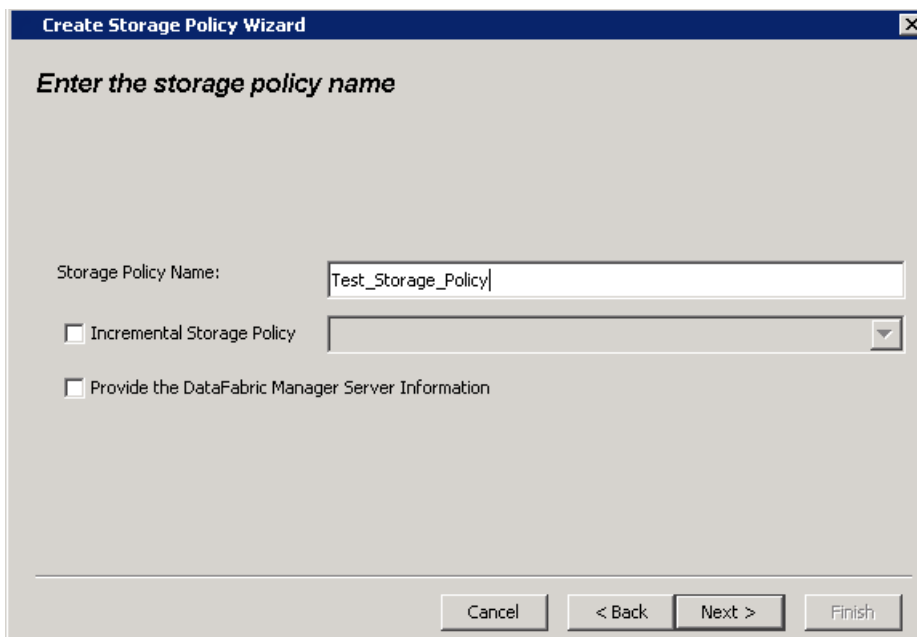
8. In the **What will this storage policy be used for?** dialog box, click **Data Protection and Archiving** and then click **Next**.



9. In the **Enter the storage policy name** dialog box, type the name of the Storage Policy in the **Storage Policy Name** box.

In this example, we will use **Test_Storage_Policy**.

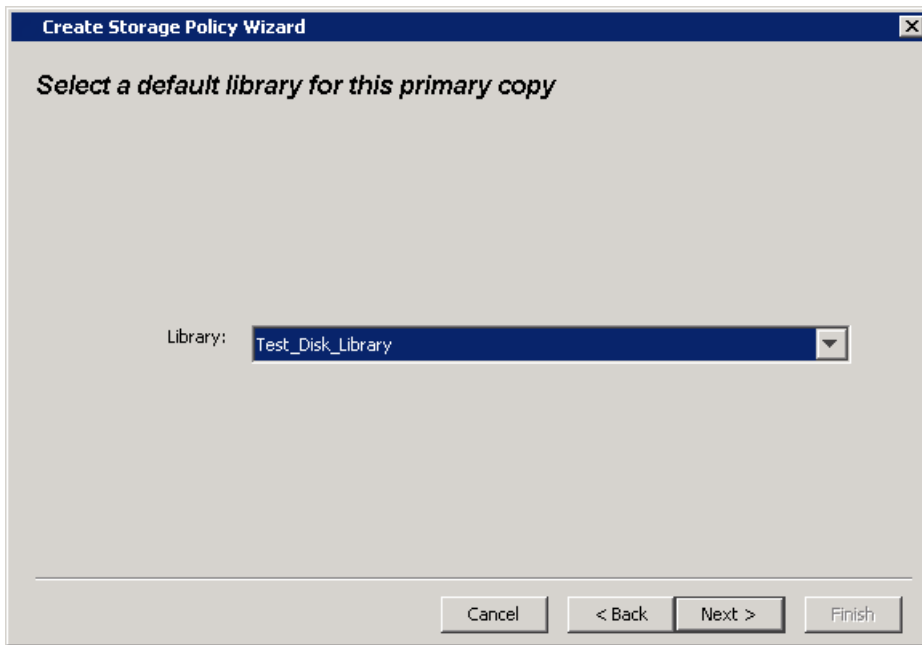
Click **Next**.



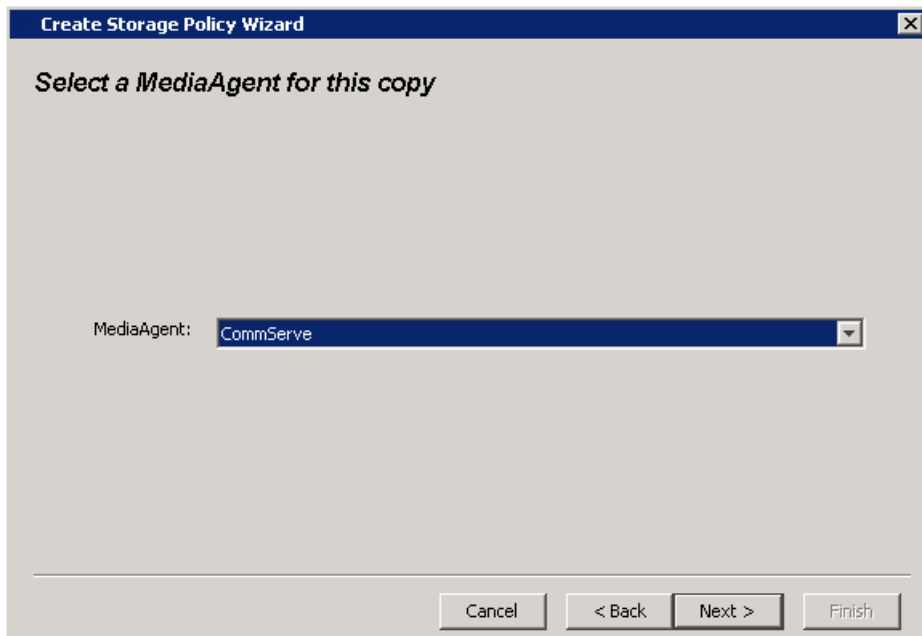
10. In the **Select a default library for this primary copy** dialog box, select a disk or tape library from the list.

Note: The disk or tape library was configured previously. See [Commvault Software Quick Start Guide - Configure a Storage Device](#).

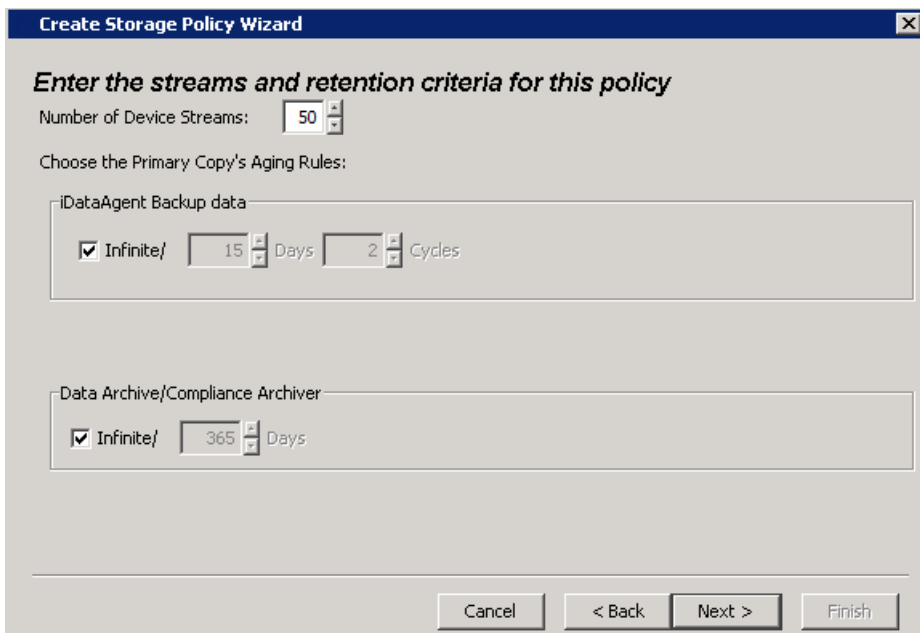
Click **Next**.



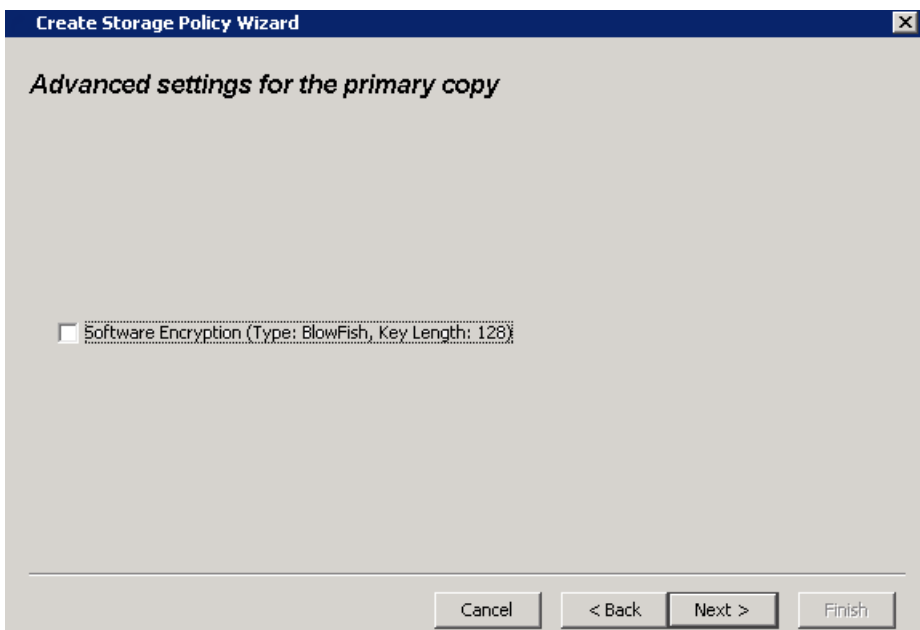
11. In the **Select a MediaAgent for this copy** dialog box, select a MediaAgent from the list. Click **Next**.



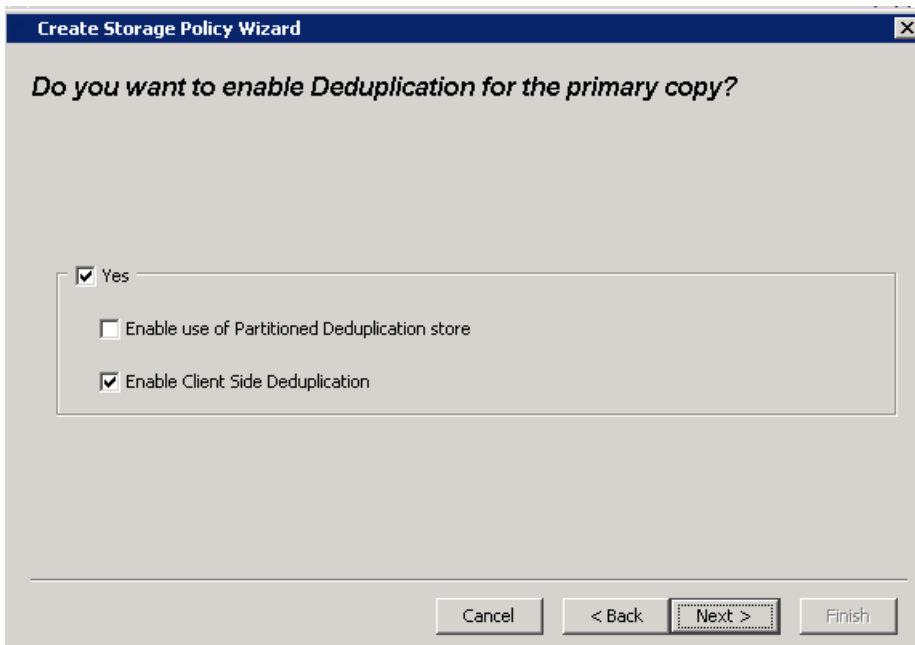
12. In the **Enter the streams and retention criteria for this policy** dialog box, click **Next**.



13. Select the **Software Encryption** option to enable encryption on copies including the primary copy. Click **Next**.



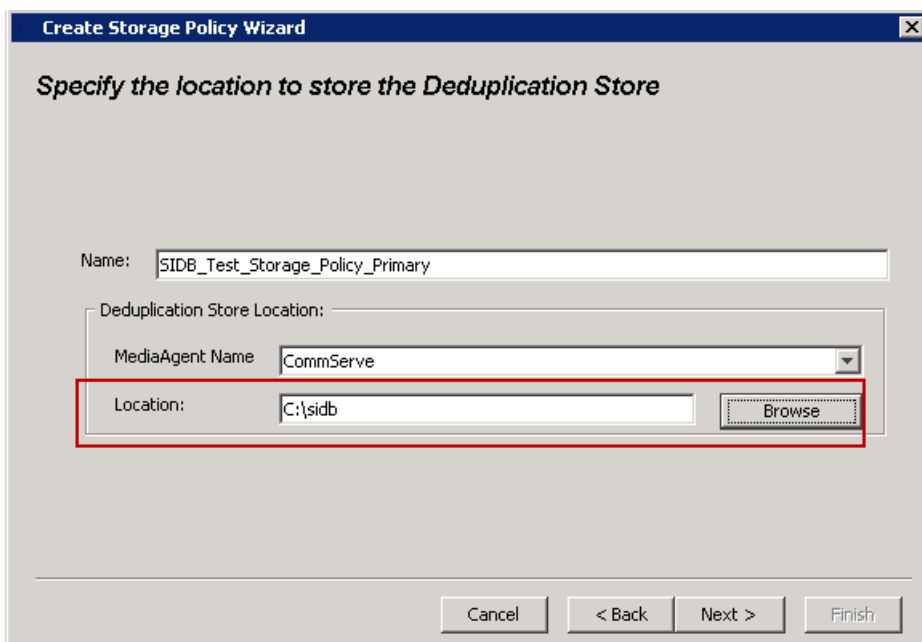
14. In the **Do you want to enable Deduplication for the primary copy** dialog box, select **Yes** and click **Next**.



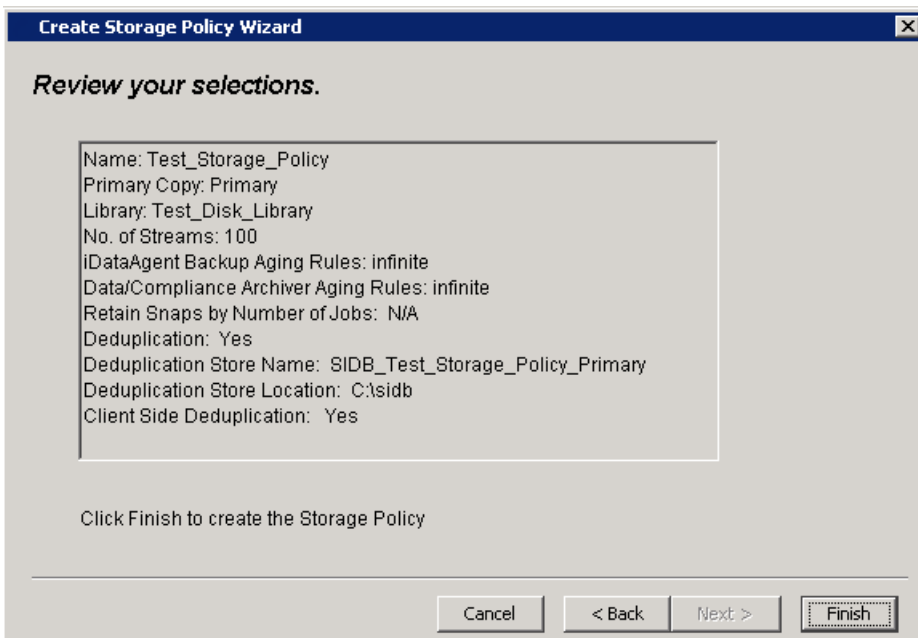
15. In the **Specify the location to store the Deduplication Store** dialog box, select a MediaAgent from the **MediaAgent Name** list.

In the **Location** box, type the path name where the deduplication database must be located or click **Browse** button to select the folder.

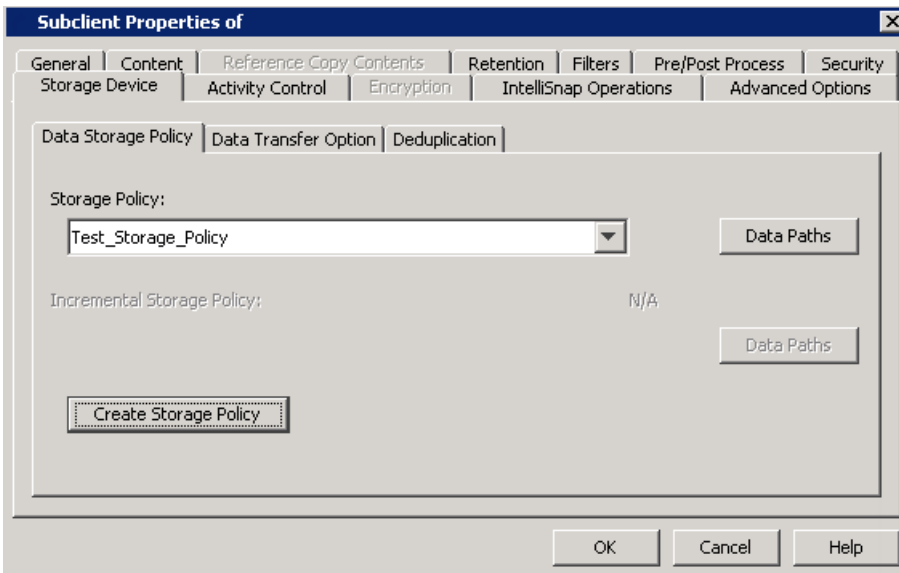
Click **Next**.



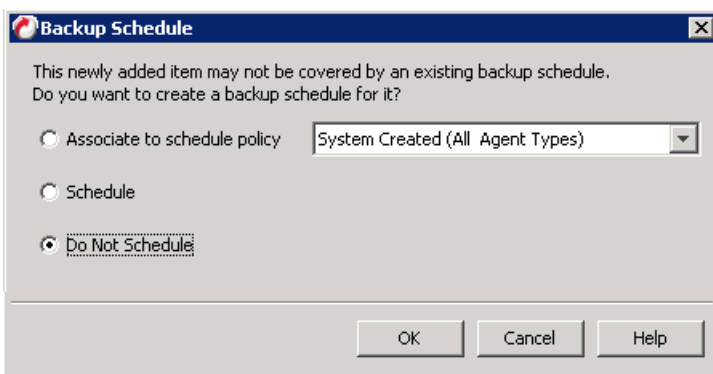
16. In the **Review your selections** dialog box, confirm the details and then click **Finish**.



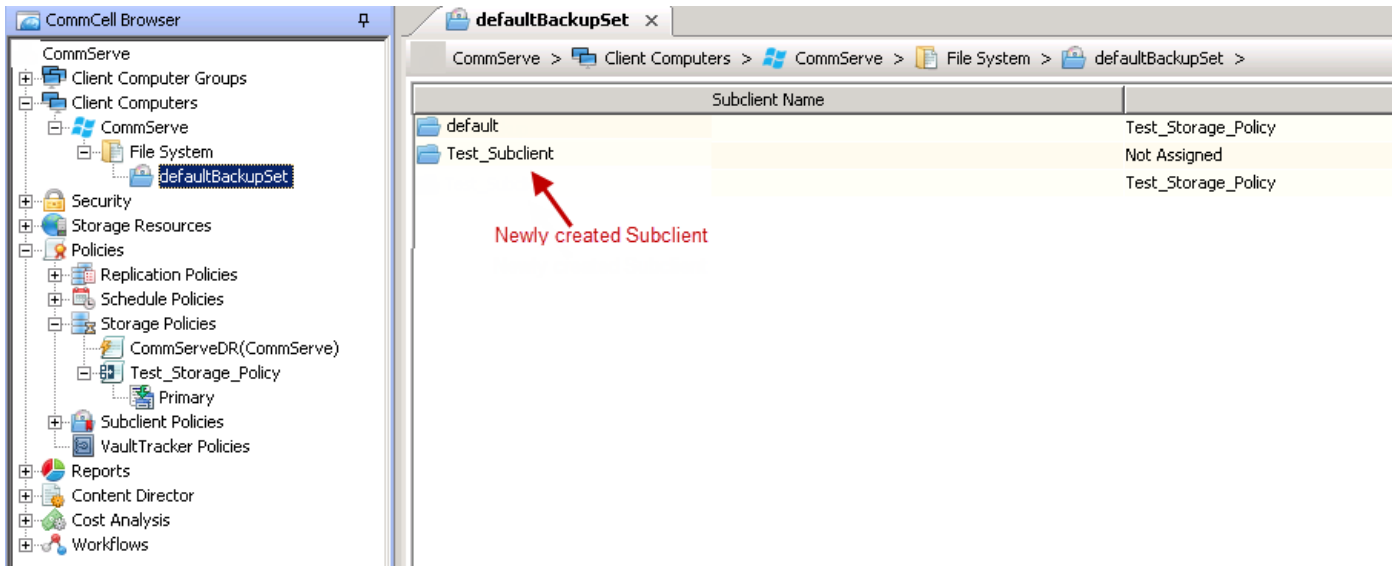
17. In the **Subclient Properties** dialog box, click **OK**.



18. In the **Backup Schedule** dialog box, select **Do Not Schedule** and then click **OK**.



19. The new subclient appears under the **defaultBackupSet** in the **CommCell Browser**.



What To Do Next

Now that you have configured a subclient, we recommend that you perform a backup operation to gain an understanding of the process. See [Quick Start Guide - Back Up Data](#).

Last modified: 8/6/2018 8:23:50 PM

Quick Start Guide - Back Up Data

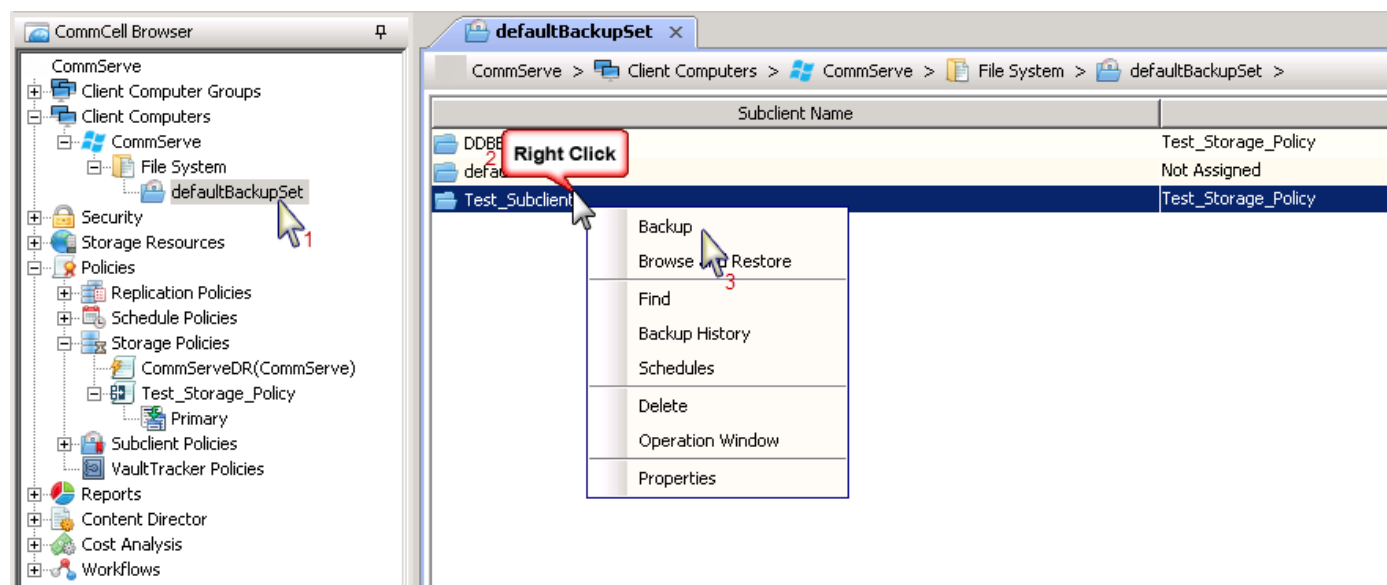
The software provides seamless and efficient backup and restore of data and information in your enterprise from most mainstream operating systems, databases, and applications. The backup agents interface with file systems and applications to facilitate the transfer of data from production systems to the protected environment.

Use this procedure to perform your first backup.

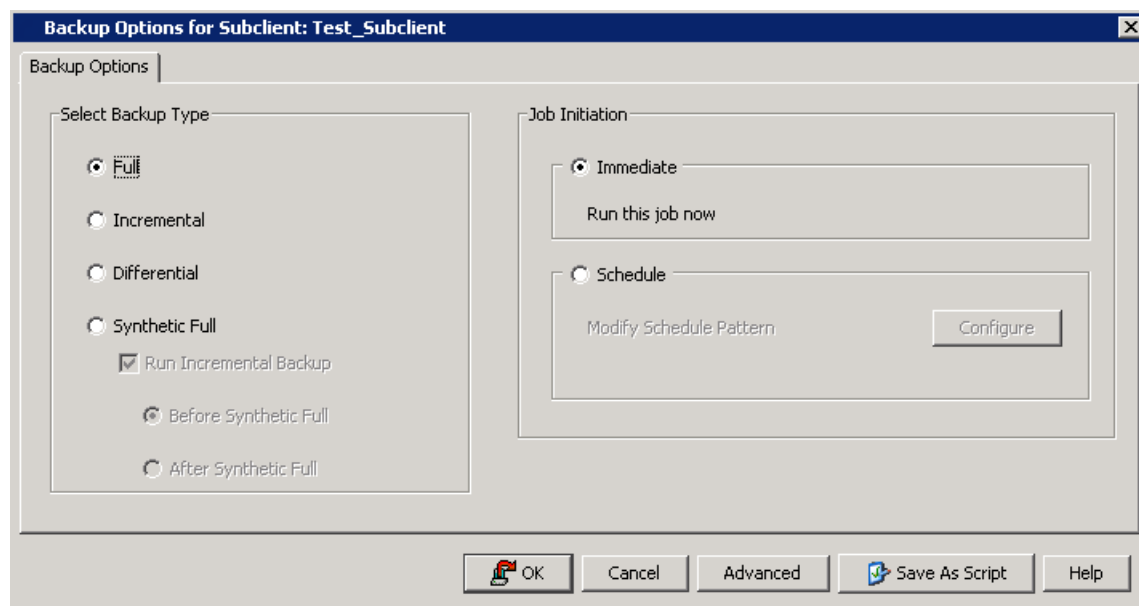
Procedure

1. From the CommCell Browser, navigate to **Client Computers > client > File System > defaultBackupSet**.
Right-click the **subclient**, and then click **Backup**.

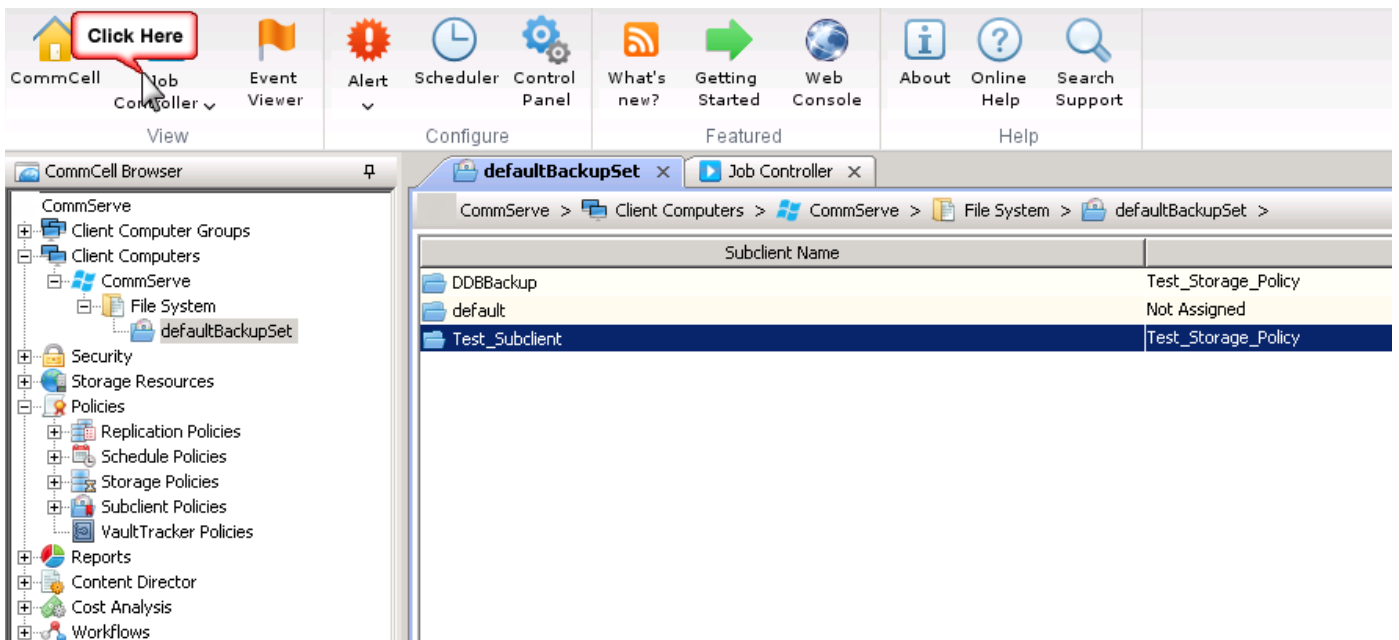
Note: In this example, we use the subclient we created, **Test_Subclient**.



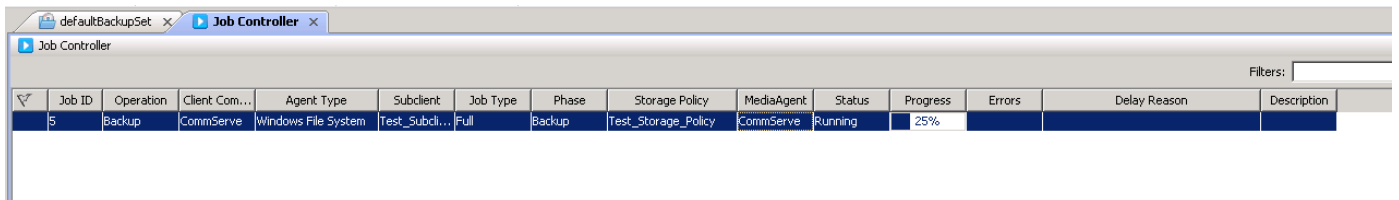
2. In the **Select Backup Type** section, click **Full**, and in the **Job Initiation** section click **Immediate**.
Click **OK**.



3. You can track the progress of the job from the **Job Controller** window of the CommCell Console. Click **Job Controller** on the ribbon.

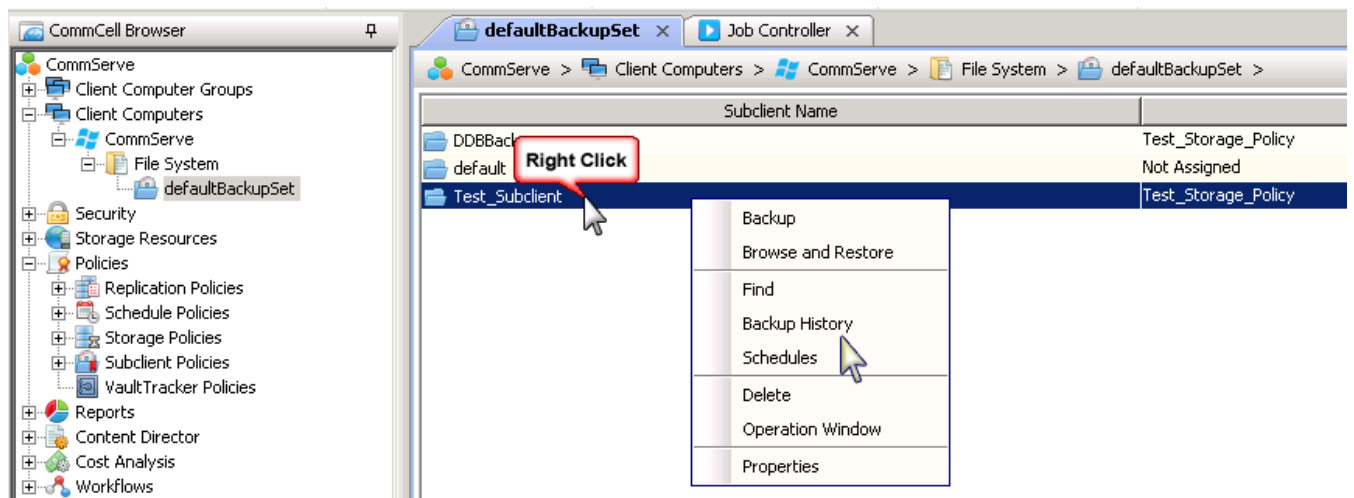


The Job Controller is displayed:

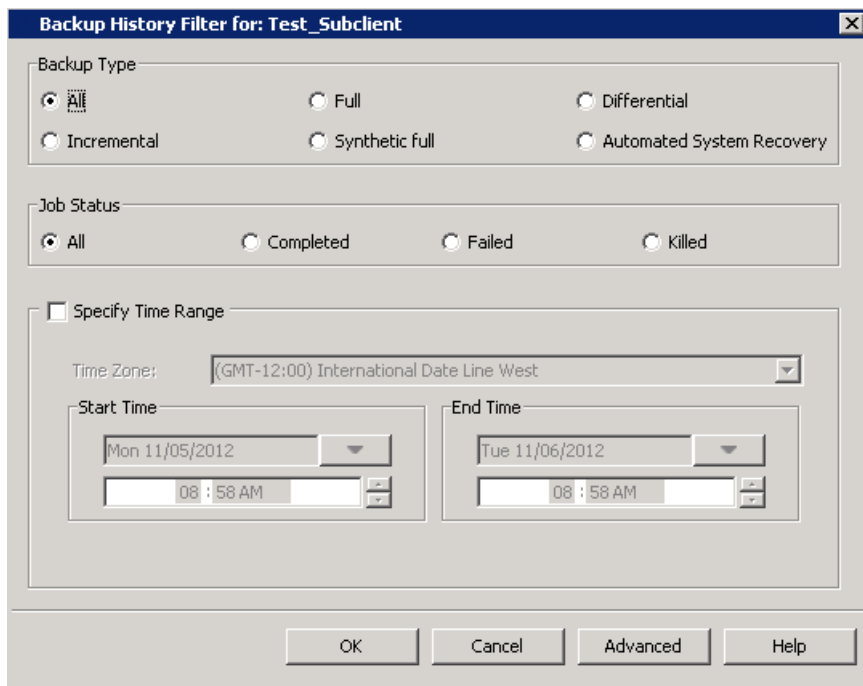


4. Once the job is complete, you can view the job details from the **Backup History**.

a. Right-click the **Subclient** and select **Backup History**.

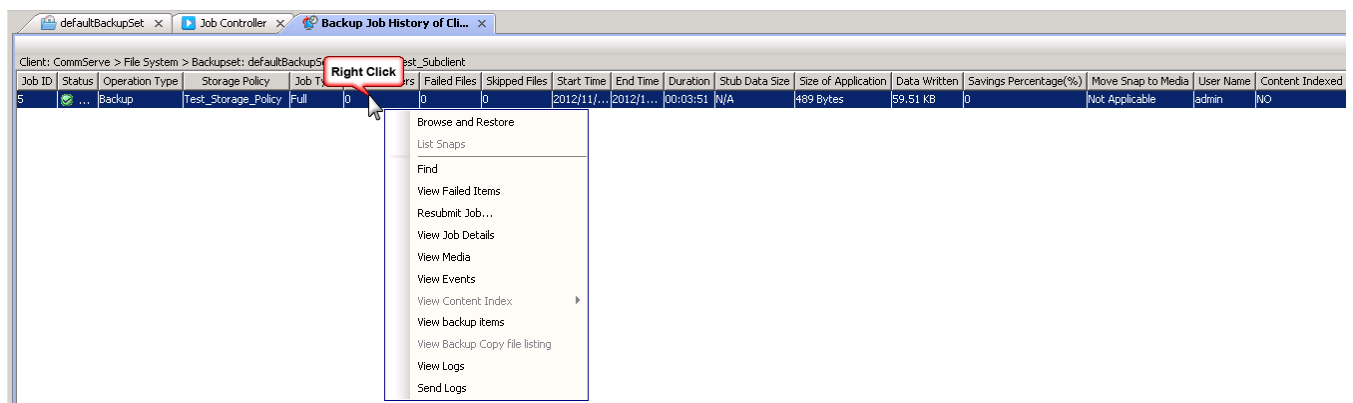


b. In the **Backup History Filter** dialog box, click **OK**.



c. You can right-click the job and view the following details:

- Items that failed during the job
- Details of the job
- Events of the job
- Log files of the job
- Media associated with the job



What To Do Next

Now that your first backup is complete, we recommend that you perform a restore operation to gain an understanding of the process. See [Quick Start Guide - Restore Data](#).

Last modified: 8/6/2018 8:26:18 PM

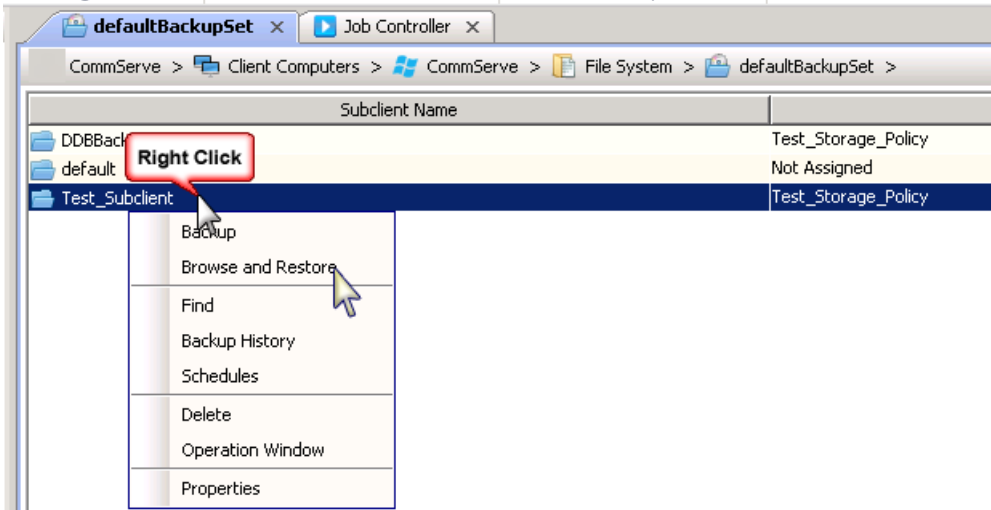
Quick Start Guide - Restore Data

We recommend you to perform a restore operation immediately after your first backup so that you can understand the process.

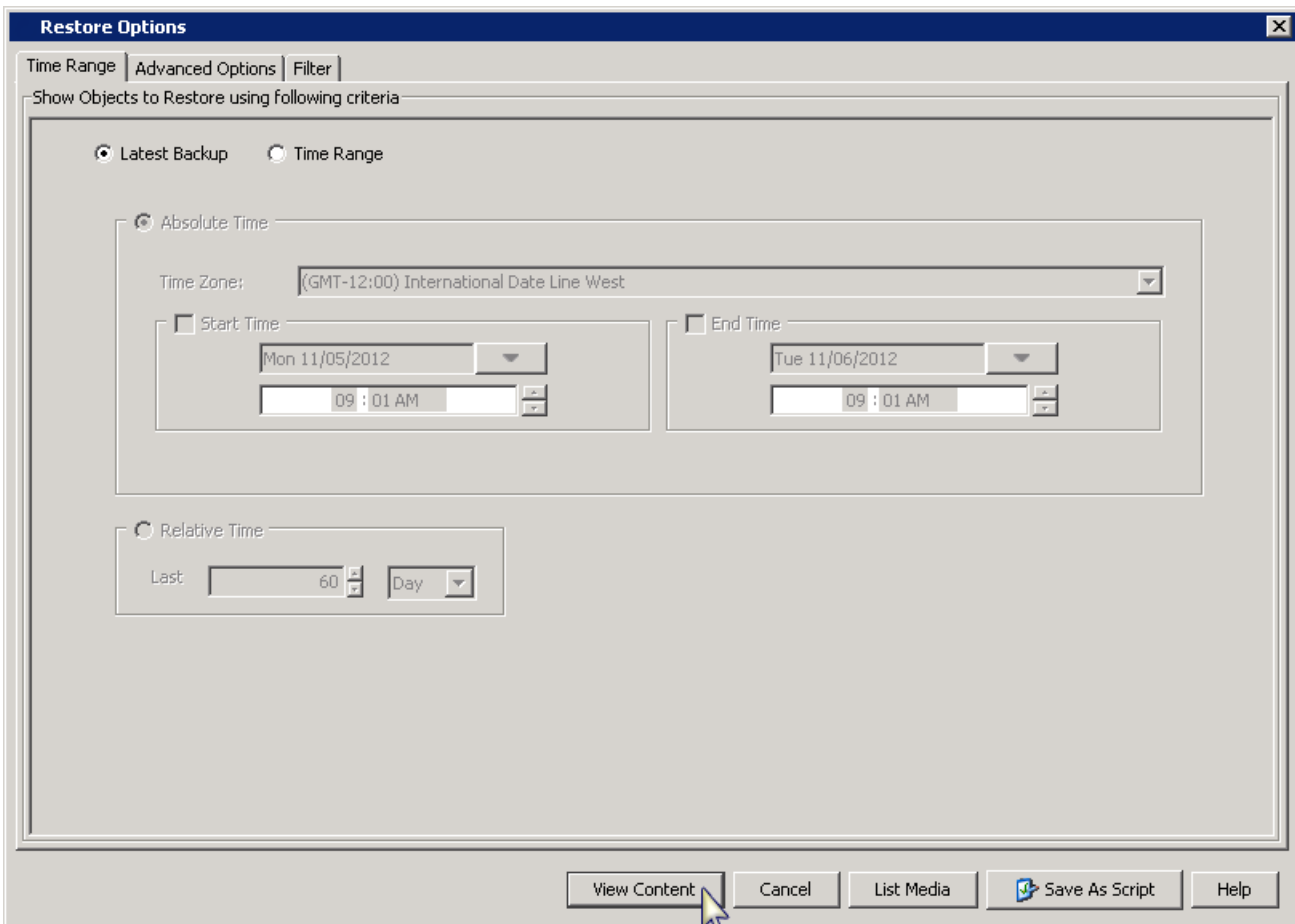
Use this procedure to perform your first restore.

Procedure

- From the CommCell Browser, navigate to **Client Computers** > *client* > **File System** > **defaultBackupSet**. Right-click the **Test_Subclient**, and then point to **Browse and Restore**.

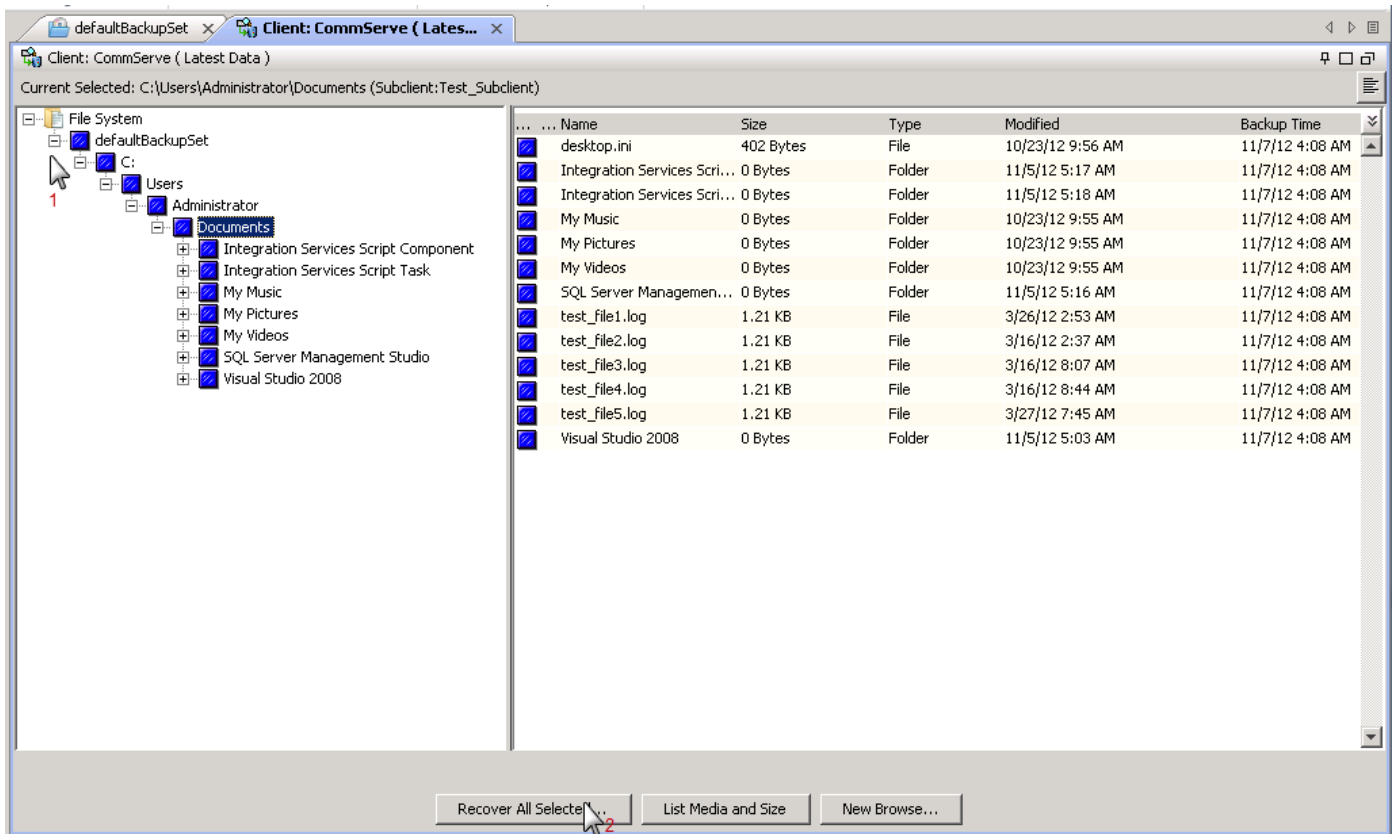


- Click **View Content**.



3. Expand the **defaultBackupSet**, and then navigate to the **My Documents** folder.

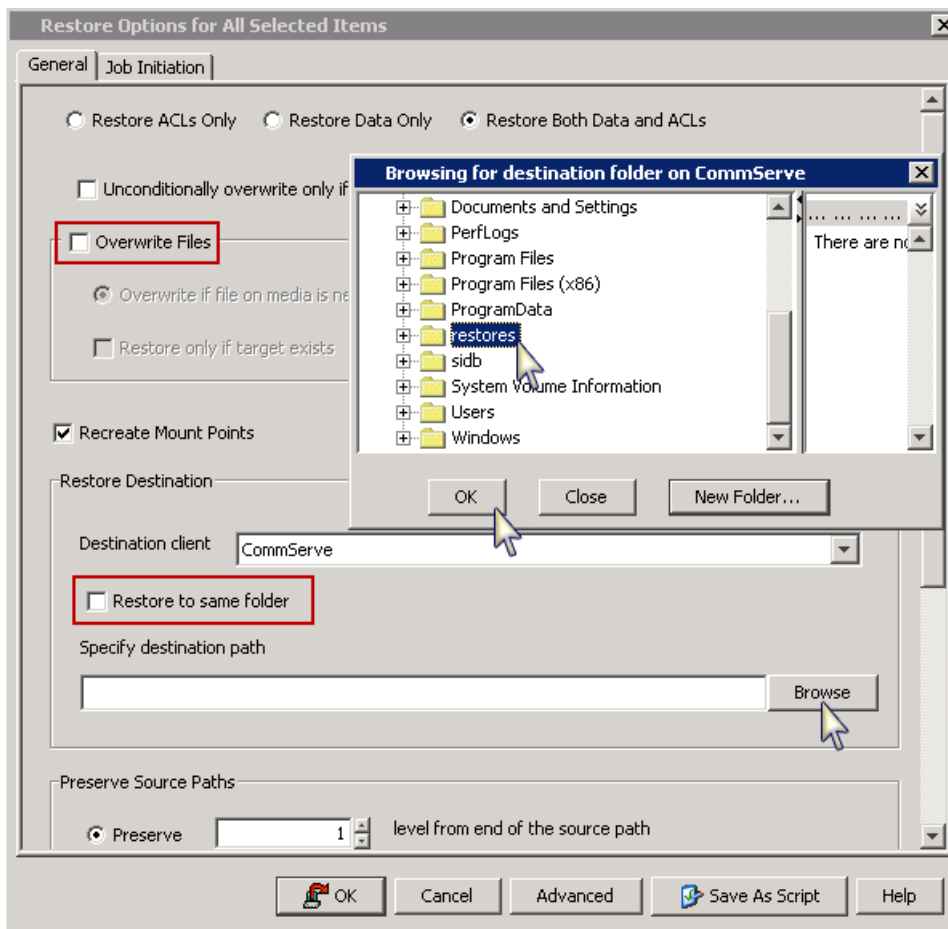
Click **Recover All Selected**.



4. Clear the **Overwrite Files** and **Restore to same folder** options.

Specify the destination path by clicking **Browse** button. This will ensure that the existing files are not overwritten.

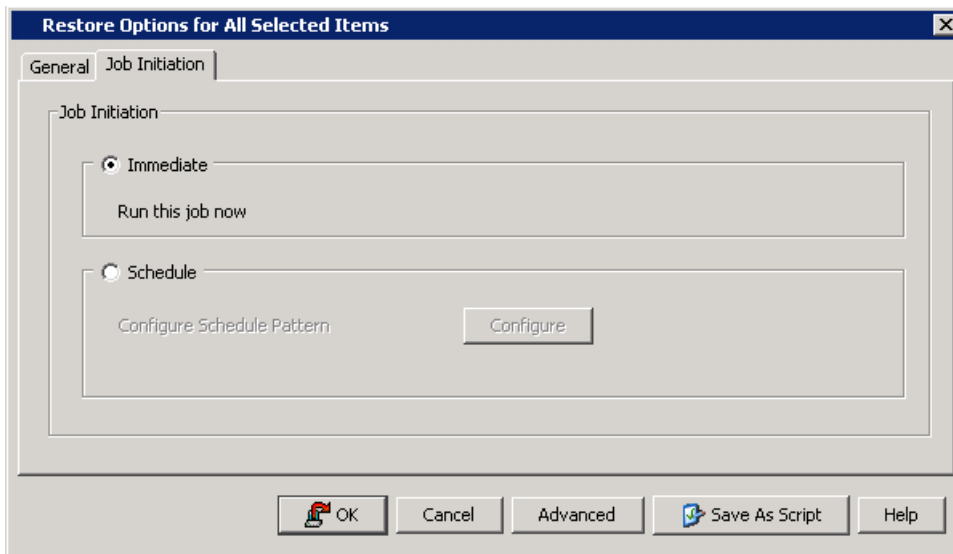
Click **OK**.



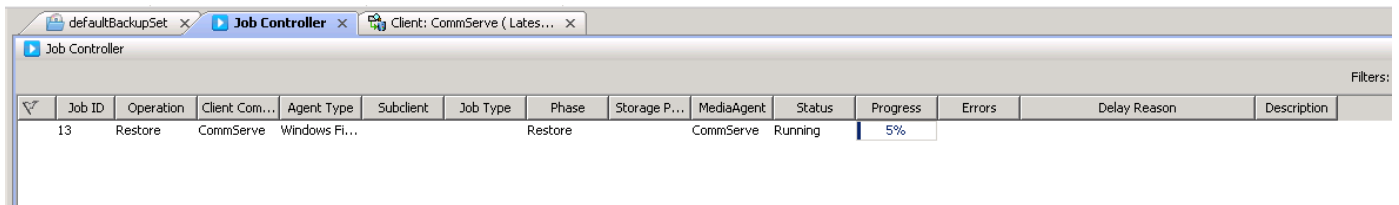
5. Click the **Job Initiation** tab.

Select **Immediate** to run the job immediately.

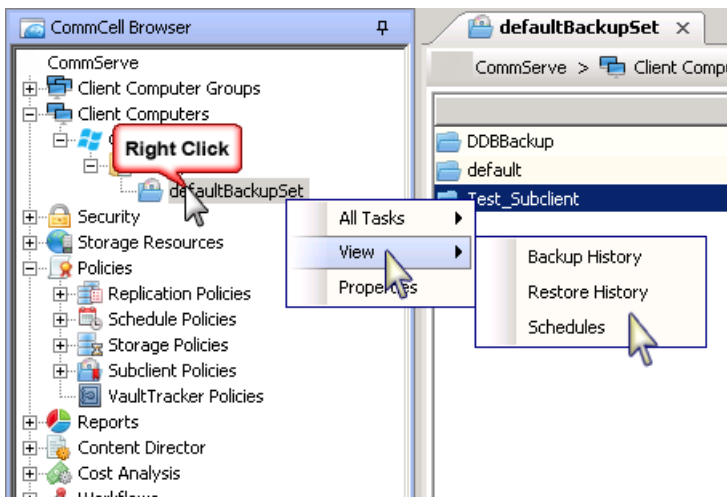
Click **OK**.



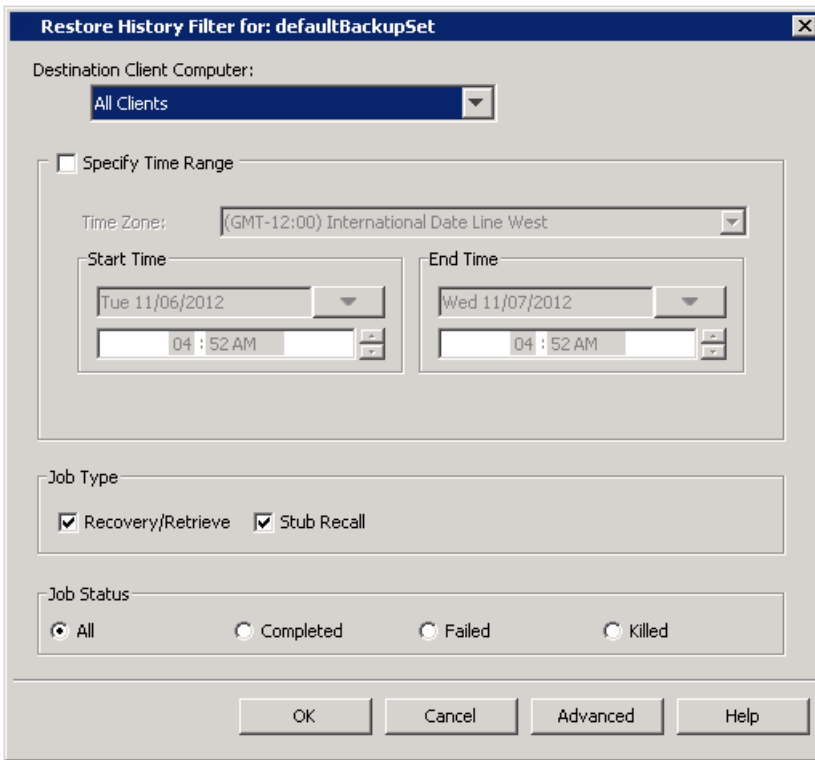
6. You can monitor the progress of the restore job in the **Job Controller** window of the CommCell Console.



7. Once the restore job is complete, right-click the **defaultBackupSet**, point to **View**, and then click **Restore History**.

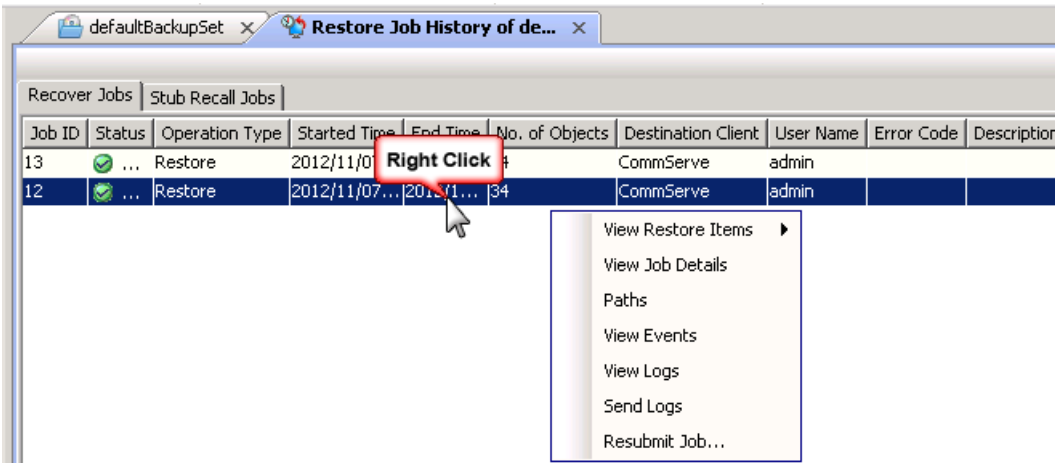


8. Click **OK**.

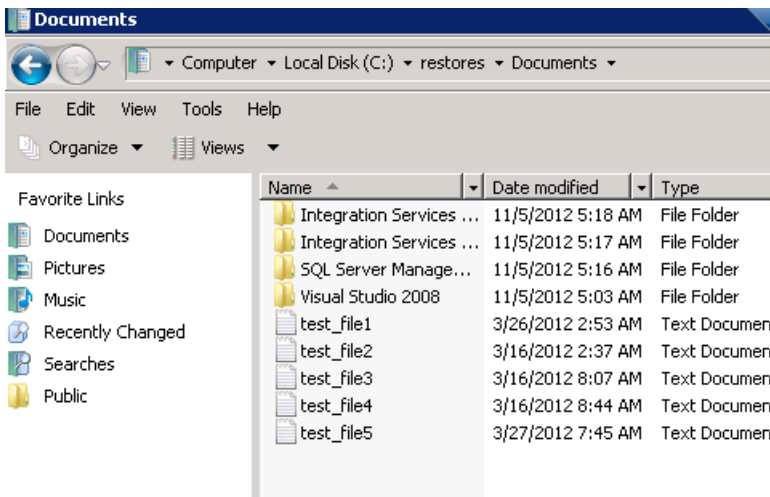


9. You can right-click the job and view the following details:

- View Restore Items
You can view them as **Successful**, **Failed**, **Skipped** or **All**.
- View Job Details
- View Events of the restore job
 - View Log files of the restore job



1. Once the files are restored, verify that the restored files and folders are available in the restore destination path that you defined in [step 4](#).



Congratulations - You have successfully completed your first backup and restore.


What to do Next

[Quick Start Guide - Where to Go from Here](#)

Last modified: 8/6/2018 8:29:24 PM


Quick Start Guide - What to Do Next

We recommend that you further explore and set up your CommCell.

1. Perform basic CommCell configuration.
 - a. Open the CommCell Console. For instructions, see [Open the CommCell Console](#) .
 - b. From the CommCell Console ribbon, on the **Home** tab, click **Getting Started**.
 - c. In the **Getting Started** pane, click the links to set up your CommCell.

2. Install and configure new clients in the CommCell.

Install agent software on the computers where you need to protect data. For example, if you want to protect Microsoft SQL databases in your organization, you must install and configure the SQL Server Agent software on the computers where the databases reside.

The most common method to install agents on a computer is to perform the installation from the CommCell Console, also known as remote installation. For more information, see [Installing Commvault Software Remotely Using the CommCell Console](#) .

3. Plan for a disaster and how to recover your CommCell and your data.

For more information, see [CommCell Disaster Recovery](#) .

Last modified: 7/26/2018 8:34:36 PM

Trademark Acknowledgment

Commvault, Commvault and logo, the "CV" logo, Commvault Systems, Solving Forward, SIM, Singular Information Management, Simpana, Commvault Galaxy, Unified Data Management, QiNetix, Quick Recovery, QR, CommNet, GridStor, Vault Tracker, InnerVault, Quick Snap, QSnap, IntelliSnap, Recovery Director, CommServe, CommCell, ROMS, Commvault Edge, Simpana OnePass, and CommValue are trademarks or registered trademarks of Commvault Systems, Inc. All other third party brands, products, service names, trademarks, or registered service marks are the property of and used to identify the products or services of their respective owners. All specifications are subject to change without notice.

Products in Germany are not distributed using the "QNet" brand.

COMMVAULT®

For more information about Commvault® software modules and solutions, and for up-to-date system requirements, please contact us: www.commvault.com • 888.746.3849 • get-info@commvault.com

Commvault Worldwide Headquarters

1 Commvault Way • Tinton Falls, NJ 07724 • Phone: 888.746.3849 • Fax: 732.870.4525

Commvault Regional Offices

United States • Europe • Middle East & Africa • Asia-Pacific • Latin America & Caribbean Canada • India • Oceania

